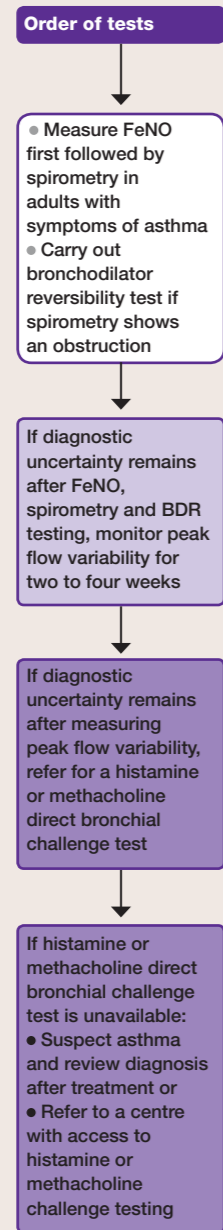
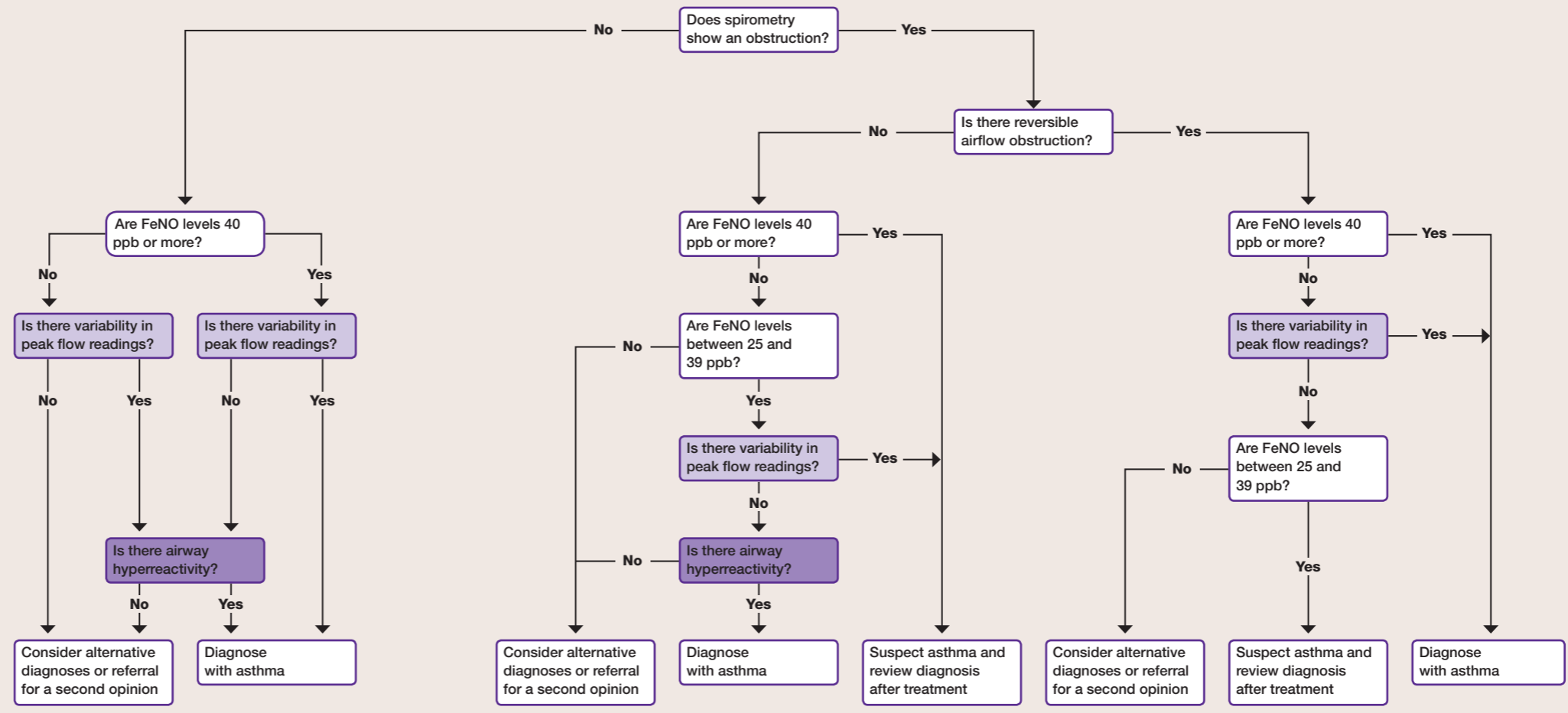


Objective tests for asthma in adults aged 17 and over



Interpretation of test results for adults aged 17 and over with symptoms suggestive of asthma



Positive test thresholds
Obstructive spirometry FEV1/FVC ratio less than 70% (or below the lower limit of normal if available)
FeNO 40 ppb or more
BDR improvement in FEV1 of 12% or more and increase in volume of 200 ml or more
Peak flow variability variability over 20%
Direct bronchial challenge test with histamine or methacholine PC20 of 8 mg/ml or less